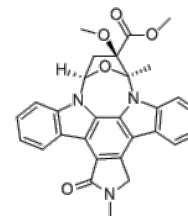


**Product Name** : KT-5823  
**Cat. No.** : PC-63045  
**CAS No.** : 126643-37-6  
**Molecular Formula** : C<sub>29</sub>H<sub>25</sub>N<sub>3</sub>O<sub>5</sub>  
**Molecular Weight** : 495.525  
**Target** : Protein Kinase G (PKG)  
**Solubility** : 10 mM in DMSO



## Biological Activity

KT-5823 is a potent, highly specific **PKG** (cGMP-dependent protein kinase) inhibitor with  $K_i$  of 0.234  $\mu$ M. KT-5823 also inhibits PKA and PKC with  $K_i$  values of 10  $\mu$ M and 4  $\mu$ M, respectively. KT-5823 arrests cells at a later time that is approximately 6 h after the G<sub>0</sub>/G<sub>1</sub> boundary.

## References

- Gadbois DM, et al. *Proc Natl Acad Sci U S A*. 1992 Sep 15;89(18):8626-30.  
Burkhardt M, et al. *J Biol Chem*. 2000 Oct 27;275(43):33536-41.  
Beyer S, et al. *Endocrinology*. 2011 Mar;152(3):782-92.

**Caution: Product has not been fully validated for medical applications. Lab Use Only!**

E-mail: tech@probechem.com